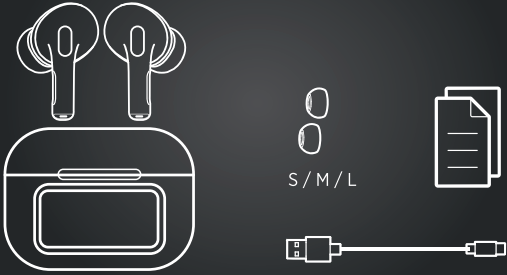


FAST OPERATION GUIDE

DECIBEL PLUS 38.106.90

PRODUCT INVENTORY

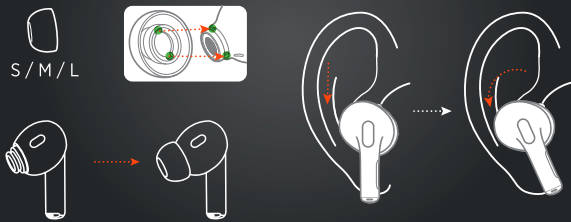


PRODUCT PARAMETER

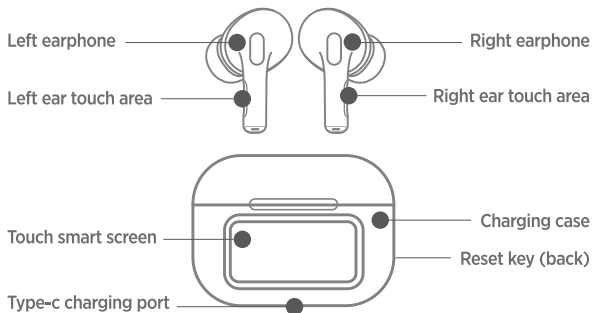
Bluetooth version: V5.4
 Transmission distance: 13 km
 Charging port: Type-C
 Charging time for case: 1.5 h
 Playing time: 4-5h
 Earbuds battery capacity: 35 mAh
 Charging battery capacity: 300 mAh

WEARING MODE

1. Try different sizes for a perfect fit and audio performance.
2. Adjust to a comfortable position.



PRODUCT DIAGRAM



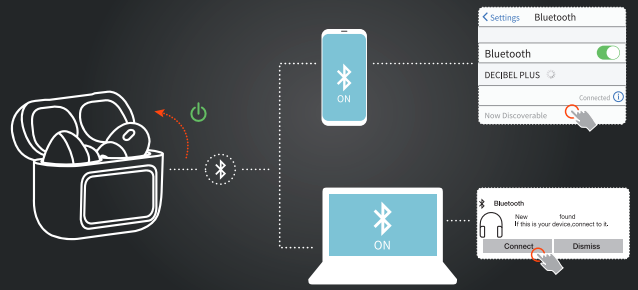
APP CONNECTION GUIDE

Scan the QR code below or search in the App Store, download and install the "ZWSVIBE" app, register and log in.



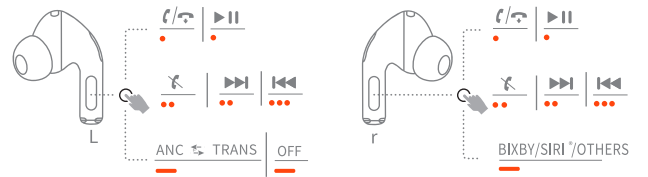
Scan to download

OPENING AND CONNECTING



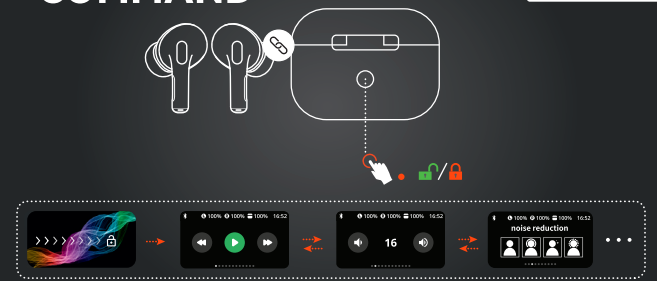
EARPHONE TOUCH COMMAND

- TAP x 1
- TAP x 2
- TAP x 3
- HOLD (2S)



SMART SCREEN TOUCH COMMAND

- TAP x 1
- SLIDE

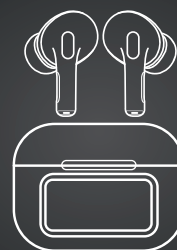


RESET FUNCTION



MATTERS NEEDING ATTENTION

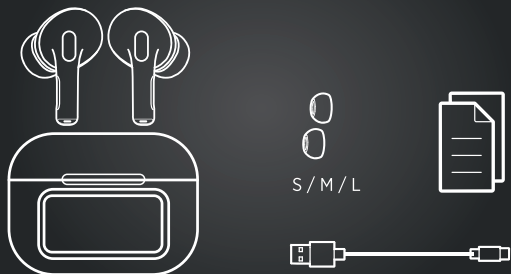
1. Please reasonably control the volume and time of using the headset to avoid hearing damage;
2. Do not use headphones in potentially dangerous environments to ensure safety;
3. Try to avoid using headphones to listen to music, make or receive phone calls while driving, so as not to distract attention and cause danger;
4. Please place earphones out of reach of children to avoid danger caused by improper use of children;
5. Avoid storing or using headphones at temperatures lower than -20 C or higher than 45C, which will shorten the life of the headphones and battery;
6. Do not disassemble, repair and transform this product by yourself;
7. The battery of this product is not replaceable. Please dispose of it according to local regulations or recycle it by a professional organization. Do not dispose of in fire for risk of explosion;
8. When the headset is not used for a long time, please charge the headset every 3 months to extend the battery life of the headset;
9. Do not expose the battery to high temperature environments such as sunshine and fire;
10. The output voltage and current of the charger are not greater than 5V/1A, if the output voltage and current of the charger exceed the limit value, it is possible Will cause serious damage to the product, product warranty will be void at the same time;
11. Please dispose of waste electronic products correctly, and do not discard electronic and electrical equipment, components, batteries and other household garbage together;
12. Please charge in a safe environment. When charging the charging bin, please pull out the charging cable as soon as possible after the charge is full to avoid long Time charging causes damage to the battery.



BRZI VODIČ ZA UPOTREBU

DECIBEL PLUS 38.106.90

INVENTAR PROIZVODA

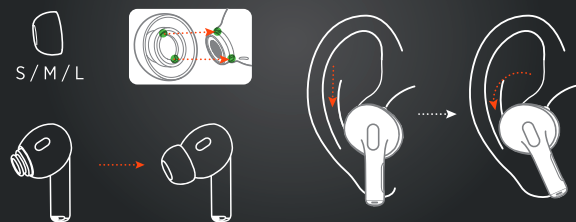


PARAMETRI PROIZVODA

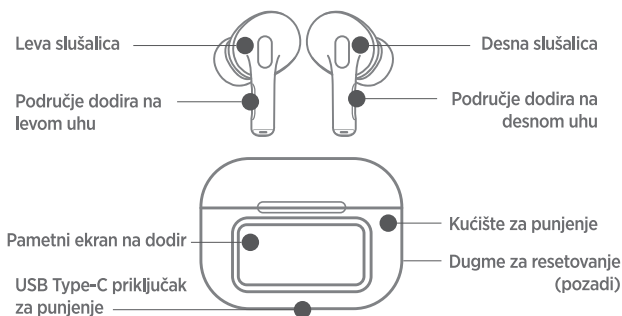
Verzija Bluetooth-a: V5.4
Udaljenost prenosa: 13 mm
Port za punjenje: Type-C
Vreme punjenja za kutiju: 1.5 h
Vreme reprodukcije: 4-5 h
Kapacitet baterije slušalica: 35 mAh
Kapacitet punjive baterije: 300 mAh

NAČIN NOŠENJA

1. Isprobajte različite veličine za savršeno pristajanje i audio performanse. 2. Prilagodite udoban položaj.



DIJAGRAM PROIZVODA



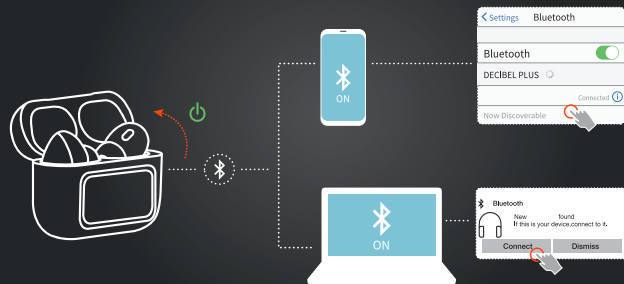
VODIČ ZA POVEZIVANJE

Skenirajte QR kod ispod ili potražite u prodavnici aplikacija, preuzmite i instalirajte aplikaciju "ZWSVIBE", registrujte se i prijavite.



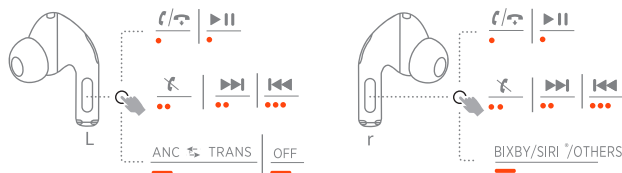
Skenirajte za preuzimanje

OTVARANJE I POVEZIVANJE



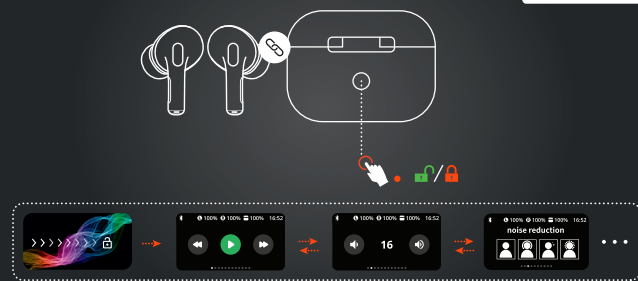
DODIRNE KOMANDE ZA SLUŠALICE

- TAP x 1
- TAP x 2
- TAP x 3
- HOLD (2S)

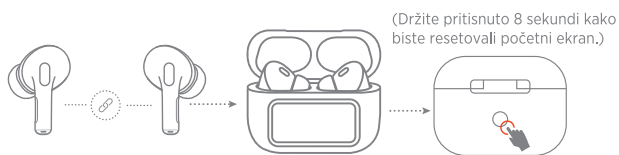


DODIRNE KOMANDE ZA PAMETNI EKLAN

- TAP x 1
- SLIDE



FUNKCIJA RESETOVANJA



VAŽNE BEZBEDNOSNE MERE

- Molimo vas da razumno kontrolirate jačinu zvuka i vreme korišćenja slušalica kako biste izbegli oštećenje sluha;
- Ne koristite slušalice u potencijalno opasnim okruženjima radi vaše sigurnosti;
- Pokušajte da izbegavate korišćenje slušalica za slušanje muzike, obavljanje ili primanje telefonskih poziva tokom vožnje, kako ne biste skrenuli pažnju i izazvali opasnost;
- Molimo vas da slušalice držite van domašaja dece kako biste izbegli opasnosti koje mogu nastati zbog nepravilne upotrebe od strane dece;
- Izbegavajte skladištenje ili upotrebu slušalica na temperaturama nižim od -20°C ili višim od 45°C, što može skratiti vek trajanja slušalica i baterije;
- Nemojte samostalno rastavljati, popravljati ili modifikovati ovaj proizvod;
- Baterija ovog proizvoda nije zamenjiva, Molimo vas da je odložite u skladu sa lokalnim propisima ili reciklirate putem profesionalne organizacije. Ne izlagati uređaj vatri zbog rizika od eksplozije;
- Kada slušalice nisu korišćene duže vreme, molimo vas da ih napunite svaka 3 meseca kako biste produžili vek trajanja baterije;
- Ne izlažite bateriju visokim temperaturama kao što su sunčeva svetlost ili vatra;
- Izlazni napon i struja punjača ne smeju biti veći od 5V/1A. Prekoračenje ovih vrednosti može prouzrokovati ozbiljna oštećenja proizvoda i poništenje garancije;
- Molimo vas da ispravno odlučite o otpadu elektronskih proizvoda i ne bacajte elektronsku opremu, komponente, baterije i druge kućne otpatke zajedno;
- Molimo vas da punitu u sigurnom okruženju. Kada punitu kućište za punjenje, odmah izvucite punjač nakon što se napuni kako biste izbegli dugotrajno punjenje koje može oštetiti bateriju.

